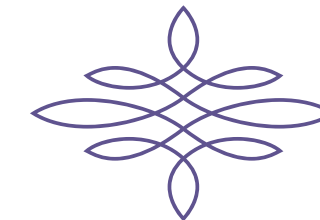




CRESTA
ALIENTO



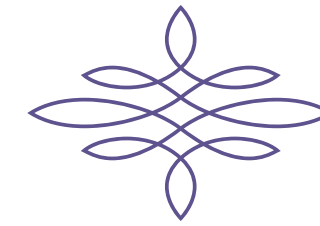
HOME RAISED TO NEW HEIGHTS



SAY HELLO TO MODERN LUXURY

Expansive. Elegant. Serene. That's the feeling at Cresta, a new home collection from Pardee Homes, where modern luxury meets inspired indoor/outdoor living. Set upon a hilltop at Aliento and surrounded by miles of rolling foothills, Cresta is elevated in every way. Charming courtyards and stylish exteriors create a welcoming entrance, while open, sun-lit rooms invite you to relax and stay a while. Enjoy the beauty of nature from home, with covered patios and oversized backyards that set the stage for festive nights with friends, or quiet evenings with family. Luxe features and lavish appointments surprise at every corner, while a range of options allow you to create a sophisticated home that's truly your own. At Cresta, ordinary becomes extraordinary.

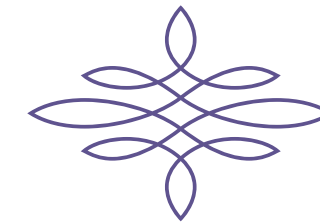




UP HERE, THERE'S MORE TO LIFE

Enter through the gates of Aliento and you'll find yourself in a stunning, natural community. Modern rustic charm, authentically crafted homes and native hillside flora come together for a sophisticated take on timeless, resort-style living. Tucked away in the rolling foothills of Santa Clarita, yet everything you need is within reach: quality schools, major employment centers, shopping, dining, entertainment and the LA lifestyle via the nearby 14/Antelope Valley Freeway. Aliento encourages healthy living. Residents enjoy miles of trails connecting to sunset overlooks. At The Terrace, residents have an enticing home base for fitness, neighborhood socializing, and poolside revelry and relaxation. Discover Aliento, and find the essence of easy living.





RESORT-STYLE FUN AT THE TERRACE

The Terrace is Aliento's resort-style club for fun, fitness and relaxation. This spectacular clubhouse and outdoor area was designed as a place for friends and family to gather, and to make the most of Santa Clarita's year-round, near-perfect climate. Grill at one of the outdoor barbecues, or just relax around a cozy fire pit as the sun goes down and the stars come out. Bring a good book and a cold drink to enjoy an afternoon in the shade of a poolside cabana. Spread a blanket on the lawn and watch the kids toss a Frisbee or kick around a soccer ball. At The Terrace, every day is like a vacation.

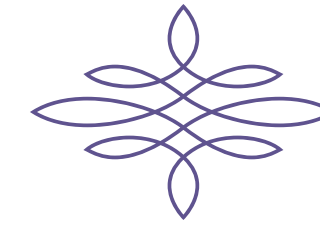


AMENITIES AT THE TERRACE

- Fitness center
- Multipurpose room
- Indoor kitchen
- Bocce ball court
- Entertainment areas
- Outdoor barbecue grills
- Fire pits
- Large lawn area
- Covered exercise area
- Lap pool
- Children's pool
- Splash pad
- Upper courtyard
- Management office

A dense, repeating pattern of stylized purple flowers with detailed petal lines, filling the left half of the page.

DISCOVER EXTRAORDINARY HILLTOP LIVING



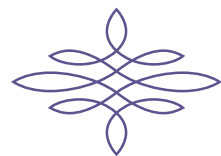
FRESH HOME DESIGNS, ELEVATED IN EVERY WAY

Cresta wows with Modern Farmhouse, Contemporary Spanish and Cottage architectural styles. These elegant homes were designed for spacious, relaxed living. Sprawling interiors mirror the natural open space that surrounds, with unique indoor/outdoor living spaces that look out onto inspiring vistas and scenic panoramas. Enjoy bright, open floor plans, gourmet kitchens, great rooms that are more than “great,” bonus rooms with endless possibilities, generous backyards and guest casitas. Three new floor plans offer room to stretch out and relax, with single- and two-story options, 4 to 6 bedrooms, 3.5 to 5.5 baths and approximately 3,144 - 4,290 square feet. Customize with options and features that matter to you most to create your perfect space. This is home raised to new heights.





PLAN 1



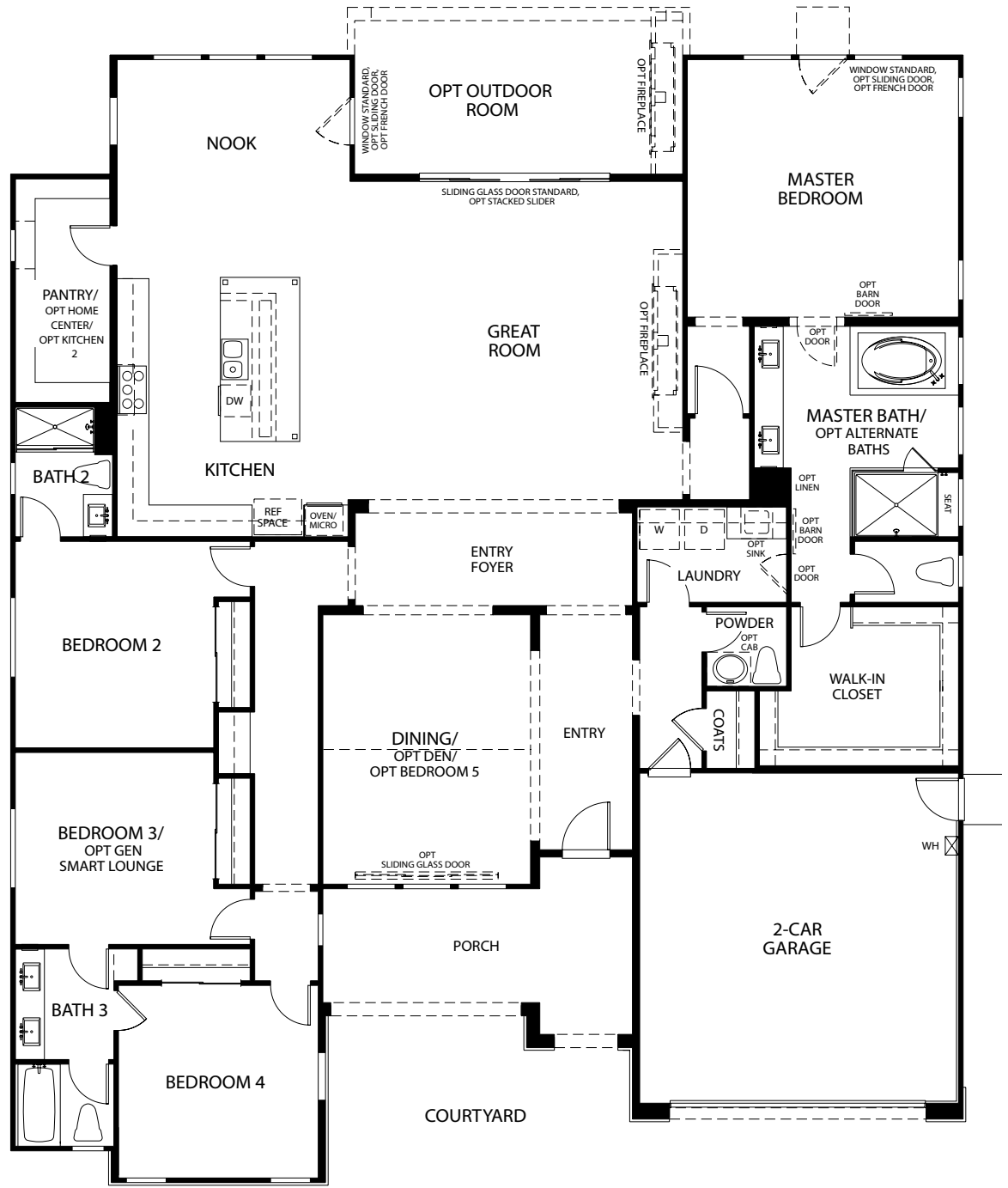
SINGLE-STORY LIVING FOR SOPHISTICATED SIMPLICITY

Come home to a welcoming front porch and courtyard, a spacious great room and flexible extra bedroom options.

- 3,144 square feet
- 4 - 5 bedrooms
- 3.5 - 4.5 baths
- Single-story floor plan
- Indoor/outdoor living spaces
- Breathtaking vistas
- Sunset overlooks
- Resort-style amenities

ELEVATION STYLES:
Contemporary Spanish
Modern Farmhouse
Cottage

FLOOR PLAN



PRELIMINARY

OPTIONS

- Outdoor Room(s)
 - With Stacked Slider
 - With Fireplace
- GenSmart™ Lounge
- Den
- GenSmart™ in Lieu of Bedroom 3
- Second Kitchen
- Home Center
- Large Shower
- Double Shower
- Bedroom 5 in Lieu of Dining



PLAN
1x



Modern Farmhouse



TWO-STORY LIVING WITH FLEXIBLE BEDROOM OPTIONS, BONUS ROOM AND ATTIC STORAGE INCLUDED

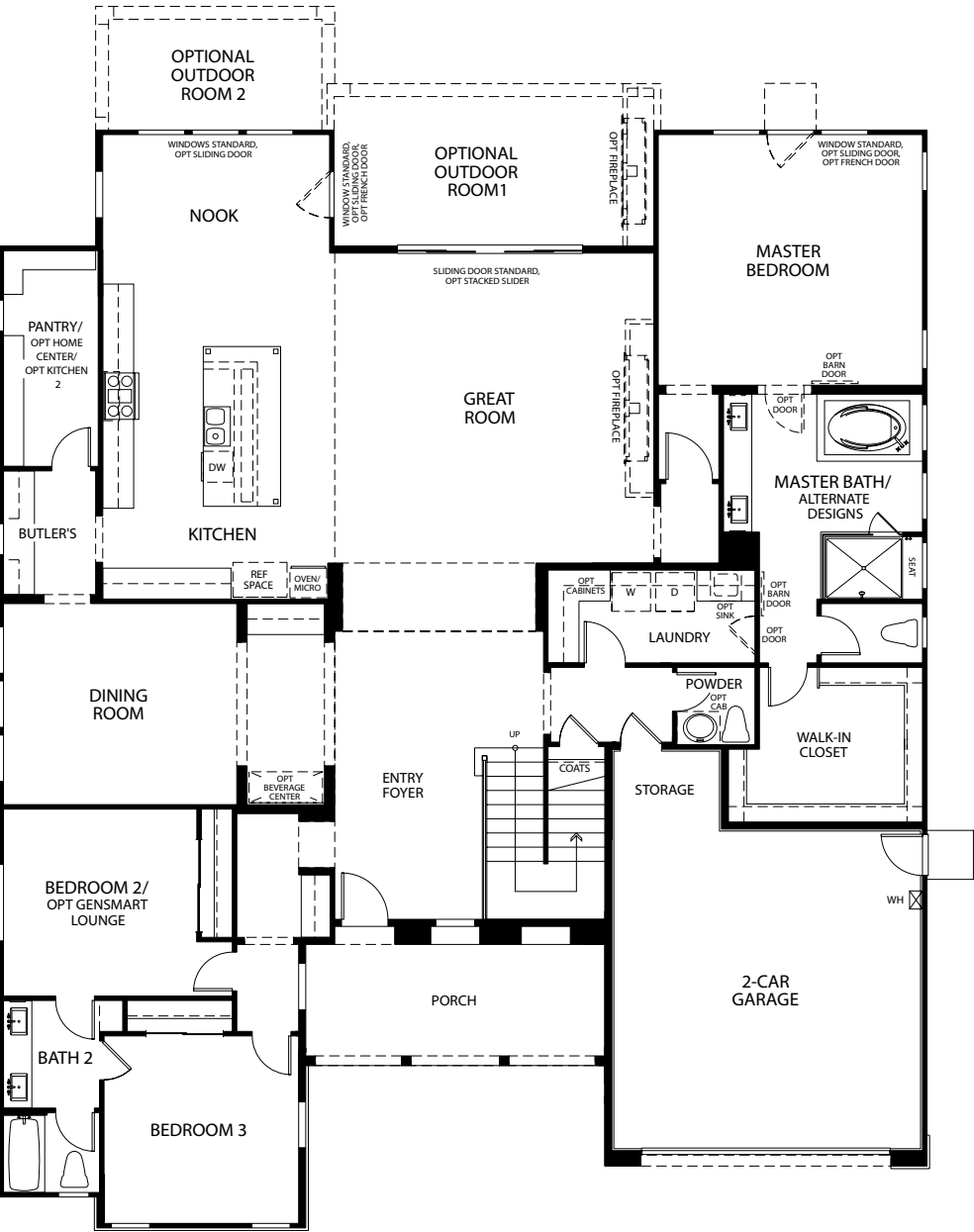
Enjoy the valley vistas with multiple outdoor rooms and covered deck options.

- 4,167 square feet
- 5 bedrooms
- 3.5 baths
- Two-story floor plan
- Indoor/outdoor living spaces
- Breathtaking vistas
- Sunset overlooks
- Resort-style amenities

ELEVATION STYLES:
Contemporary Spanish
Modern Farmhouse
Cottage

FLOOR PLAN

First Floor



PRELIMINARY

Second Floor



OPTIONS

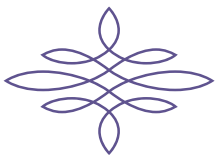
- Outdoor Room(s)
 - With Stacked Slider
 - With Fireplace
- Covered Deck
- Large Shower
- Double Shower
- GenSmart™ Lounge in Lieu of Bedroom 3
- Second Kitchen
- Home Center



PLAN 2



Cottage



SPACIOUS TWO-STORY FLOOR PLAN

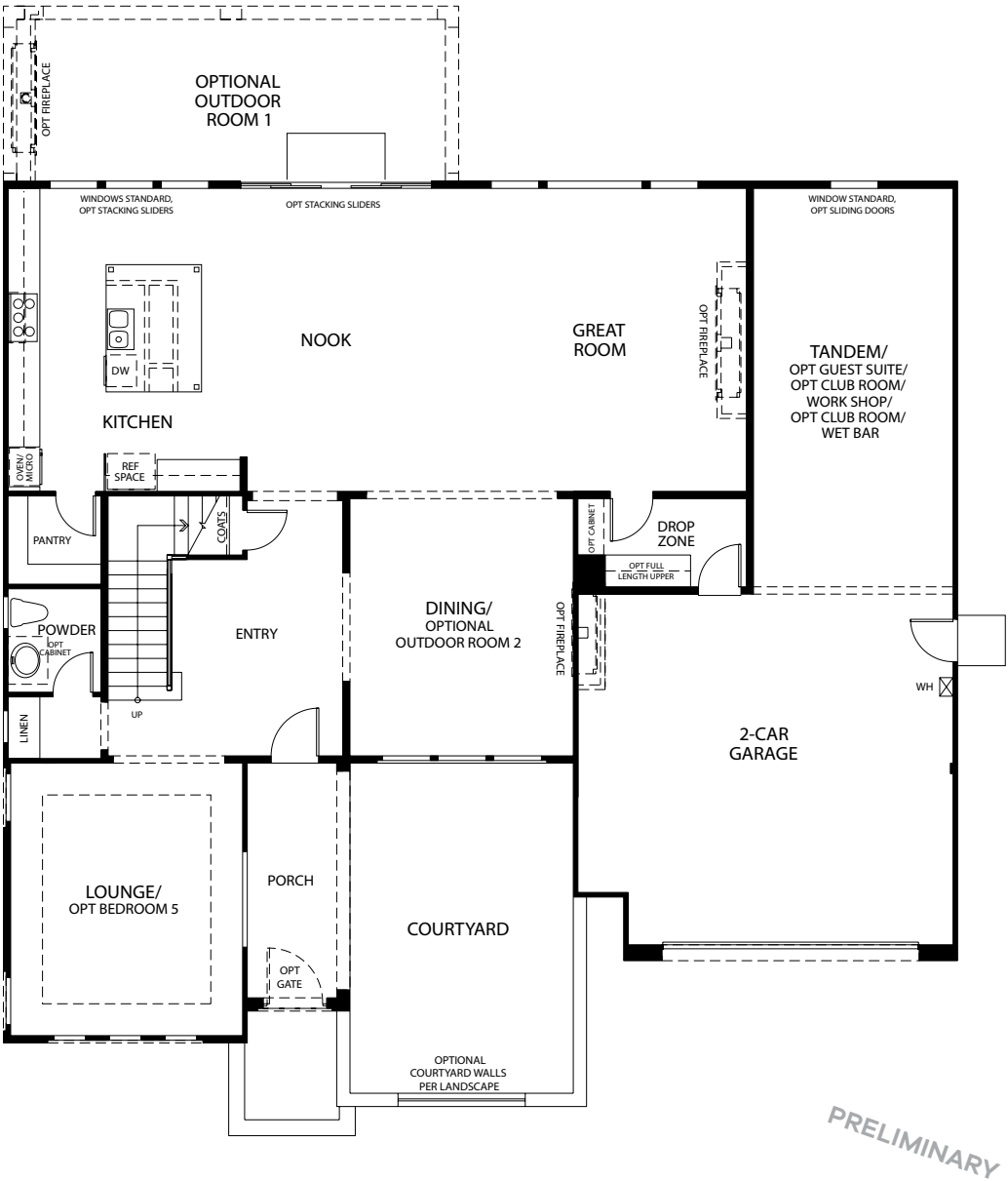
Bring the outdoors in with a front porch and courtyard, multiple outdoor rooms and covered deck options, and a multipurpose tandem suite.

- 3,822 square feet
- 4 - 6 bedrooms
- 3.5 - 5.5 baths
- Two-story floor plan
- Indoor/outdoor living spaces
- Breathtaking vistas
- Sunset overlooks
- Resort-style amenities

ELEVATION STYLES:
Contemporary Spanish
Modern Farmhouse
Cottage

FLOOR PLAN

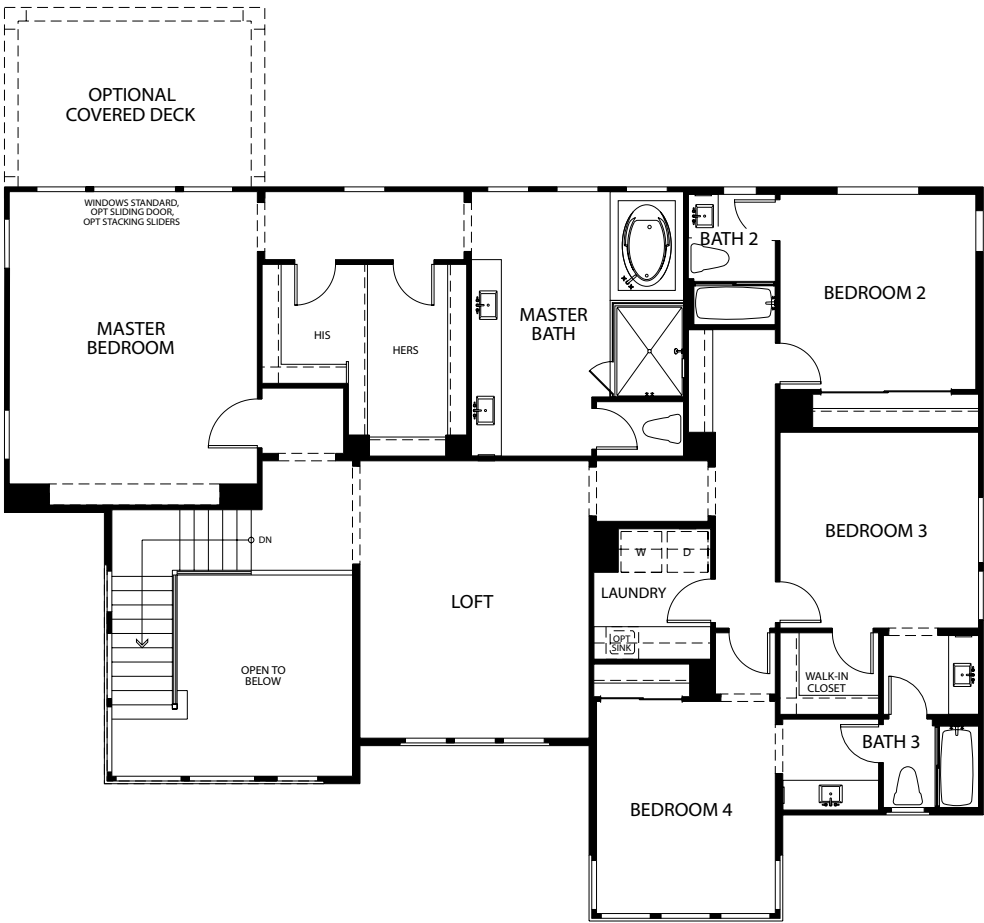
First Floor



OPTIONS

- | | |
|---|---|
| Outdoor Room(s) <ul style="list-style-type: none">• With Corner Pocket Doors• With Corner Stacking Doors• With Fireplace• With Stacking Sliders | Dining Room in Lieu of Outdoor Room 2 <ul style="list-style-type: none">Club Room/Wet Bar/Guest Suite/Workshop in Lieu of Tandem Covered Deck <ul style="list-style-type: none">• With Sliding Doors• With Stacked Sliders |
| Bedroom 5 in Lieu of Lounge | |

Second Floor

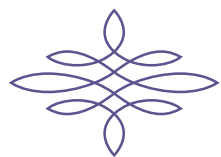




PLAN 3



Modern Farmhouse



THE ULTIMATE IN EXPANSIVE, INDOOR/OUTDOOR LIVING

Customize to your heart's content with extended kitchen options, a guest casita option and multiple outdoor rooms.

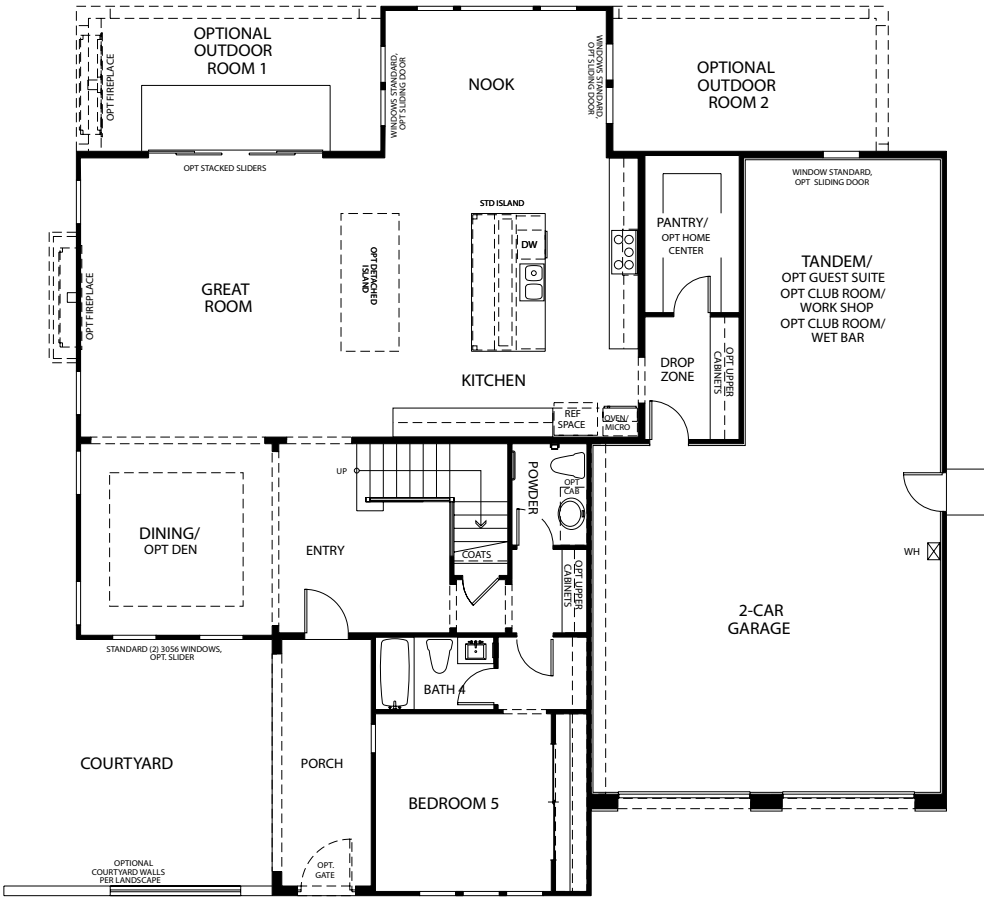
- 4,290 square feet
- 5 - 6 bedrooms
- 4.5 - 5.5 baths
- Two-story floor plan
- Breathtaking vistas
- Sunset overlooks
- Resort-style amenities
- Indoor/outdoor living spaces

ELEVATION STYLES:

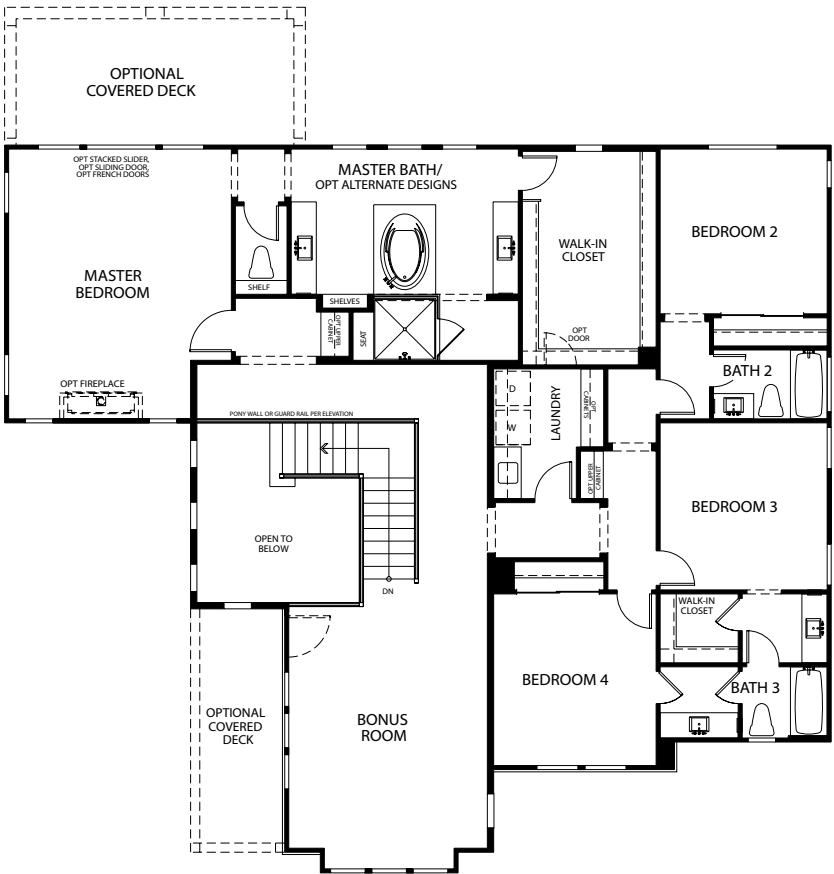
- Contemporary Spanish
- Modern Farmhouse
- Cottage

FLOOR PLAN

First Floor



Second Floor



OPTIONS

Covered Rear Deck

- With Stacked Slider
- With Pair of French Doors
- With Sliding Doors

Den in Lieu of Dining

Outdoor Room(s)

- With Sliding Doors
- With Stacked Sliders
- With Fireplace

Home Center

Second Kitchen Island

Guest Suite with Outdoor Room 2

Club Room/Wet Bar in Lieu of Tandem

Club Room/Workshop in Lieu of Tandem

Free Standing Tub at Master Bath

Covered Deck at Bonus Room



GREEN BUILDING SINCE 1998

Like all new homes built by Pardee Homes, Cresta features the

LivingSmart® package of standard and optional features that

increase energy-efficiency, save water, save you money month

after month and contribute to your long-term peace of mind.

New materials, technologies and features are constantly being

incorporated into our LivingSmart® program that includes five

specific areas of advancement: HealthSmart®, EnergySmart™,

EarthSmart®, WaterSmart® and HomeSmart™.



HEALTH
SMART

Included Features

- Low VOC interior paint
- Formaldehyde-free carpet pads

Available Features

- Low VOC interior paint packages



ENERGY
SMART

Included Features

- LED lighting
- Radiant barrier roof sheathing
- 14 SEER air conditioner
- Low-E windows
- WiFi thermostat

Available Features

- GE® ENERGY STAR® washing machines, dryers and refrigerators



EARTH
SMART

Included Features

- Engineered wood
- Convenient recycling center in kitchen

Available Features

- Electric charging station
- Low-fiber flooring



WATER
SMART

Included Features

- Rinnai® tankless water heater
- Delta WaterSense® labeled faucets
- GE® ENERGY STAR® dishwasher
- Water-efficient toilets

Available Features

- On-demand recirculating system
- WiFi-enabled tankless water heater



HOME
SMART

Included Features

- LED lighting
- WiFi thermostat
- Honeywell WiFi garage door control
- USB ports in kitchen and drop zone
- Bluetooth dimmer switches
- Wireless access point
- Ring™ Video Doorbell PRO
- Schlage Connect™ front door hardware

Available Features

- WiFi appliances
- Sonos® WiFi home theater
- Voice-automated light packages
- Other various HomeSmart™ packages
- Smart Shades



IT'S BEEN NEARLY 100 YEARS

since the Pardee Brothers began building custom

homes in Los Angeles for Hollywood celebrities and

the country-club elite. Pardee Homes neighborhoods

have garnered design awards in San Diego and

Las Vegas.

As the acclaimed builders who brought you Fair Oaks

Ranch and Moorpark Highlands, we are thrilled to

introduce Cresta at Aliento, the epitome of nearly a

century of quality homebuilding heritage. Embracing

the beauty and history of this region, each artfully

crafted home in this gated community combines

timeless architectural details and modern resort-living

with the comfort, energy-savings and performance of

contemporary design and technology.





CRESTA

ALIENTO

